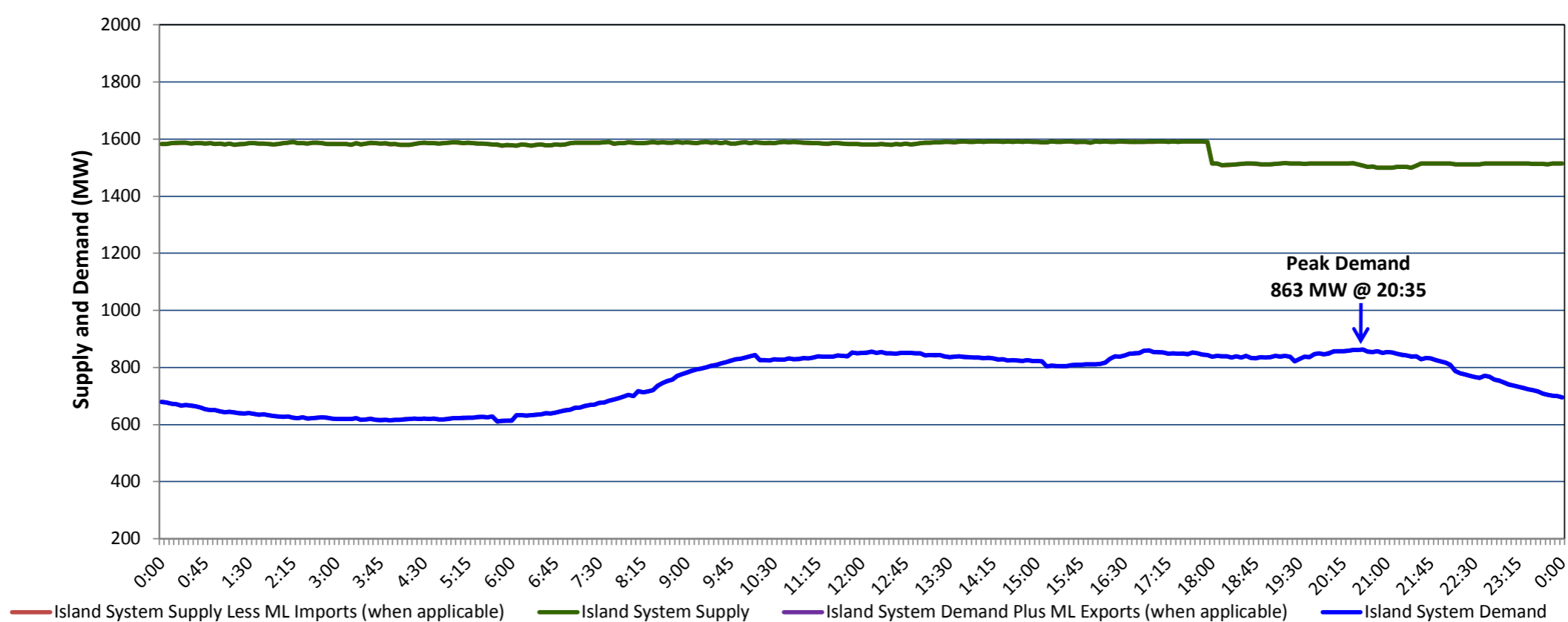


**Newfoundland Labrador Hydro (NLH)
Supply and Demand Status Report Filed Monday, April 30, 2018**

**Section 1
Island Interconnected System Supply, Demand & Exports
Actual 24 Hour System Performance For Sunday, April 29, 2018**



Supply Notes For April 29, 2018

1,2

- A As of 2115 hours, January 04, 2018, Stephenville Gas Turbine available at 25 MW (50 MW).
- B As of 0801 hours, April 02, 2018, Holyrood Unit 3 unavailable due to planned outage 110 MW (150 MW).
- C As of 1300 hours, April 05, 2018, Hawkes Bay Diesel Plant unavailable (5 MW).
- D As of 0836 hours, April 12, 2018, Holyrood Unit 1 available at 126 MW (170 MW).
- E As of 1050 hours, April 17, 2018, Bay d'Espoir Unit 6 unavailable due to planned outage (76.5 MW).
- F As of 0938 hours, April 26, 2018, Holyrood Unit 2 removed from service for economic dispatch 70 MW (170 MW).
- G **At 1800 hours, April 29, 2018, Bay d'Espoir Unit 5 unavailable due to planned outage (76.5 MW).**

**Section 2
Island Interconnected Supply and Demand**

Mon, Apr 30, 2018	Island System Outlook ³	Seven-Day Forecast	Temperature (°C)		Island System Daily Peak Demand (MW)	
			Morning	Evening	Forecast	Adjusted ⁷
Available Island System Supply: ⁵	1,460 MW	Monday, April 30, 2018	5	1	1,010	930
NLH Generation: ⁴	1,145 MW	Tuesday, May 01, 2018	2	6	1,085	1,085
NLH Power Purchases: ⁶	105 MW	Wednesday, May 02, 2018	8	7	960	960
Maritime Link Imports:	- MW	Thursday, May 03, 2018	8	11	960	960
Other Island Generation:	210 MW	Friday, May 04, 2018	2	0	1,145	1,145
Current St. John's Temperature & Windchill:	3 °C	Saturday, May 05, 2018	1	6	1,145	1,145
7-Day Island Peak Demand Forecast:	1,145 MW	Sunday, May 06, 2018	8	9	900	900

Supply Notes For April 30, 2018

3

- Notes:
1. Generation outages for running and corrective maintenance are included. These are not unusual for power system operations. They generally do not impact customer supply. The power system operators schedule outages to system equipment whenever possible to coincide with periods when customer demands are low and sufficient supply reserves are available. However, from time to time equipment outages are necessary and reserves may be impacted.
 2. Due to the Island System having no synchronous connections to the larger North American grid, when there is a sudden loss of large generating units some customer's load must be interrupted for short periods to bring generation output equal to customer demand. This automatic action of power system protection, referred to as under frequency load shedding, is necessary to ensure the integrity and reliability of system equipment. Under frequency events typically occur 5 to 8 times per year on the Island Interconnected System and the resultant customer load interruptions are generally less than 30 minutes.
 3. As of 0800 Hours.
 4. Gross output including station service at Holyrood (24.5 MW) and improved NLH hydraulic output due to water levels (35 MW).
 5. Gross output from all Island sources (including Note 4).
 6. NLH Power Purchases include: CBPP Co-Gen, Nalcor Exploits, Rattle Brook, Star Lake, Wind Generation, Vale capacity assistance (when applicable).
 7. Adjusted for CBP&P and Maritime Link Exports.

**Section 3
Island Peak Demand Information
Previous Day Actual Peak and Current Day Forecast Peak**

Sun, Apr 29, 2018	Actual Island Peak Demand ⁸	20:35	863 MW
Mon, Apr 30, 2018	Forecast Island Peak Demand		1,010 MW

Notes: 8. Island Demand / ML Exports (where applicable) is supplied by NLH generation and purchases, plus generation owned and operated by Newfoundland Power and Corner Brook Pulp & Paper (Deer Lake Power, DLP).